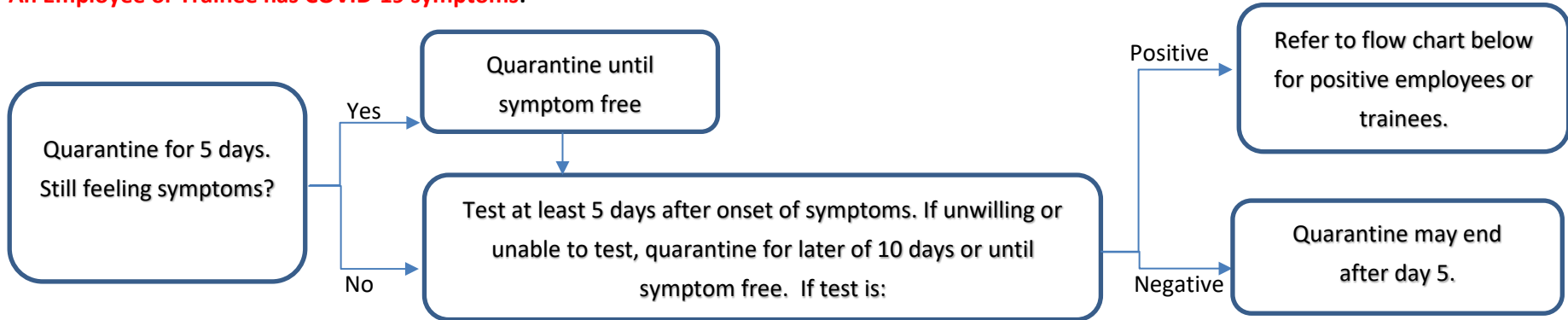


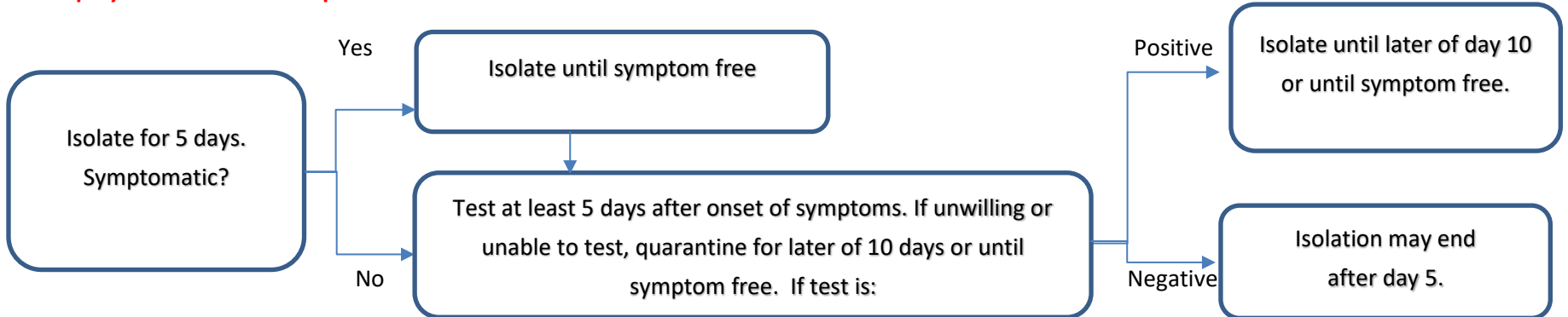
**COVID-19 DECISION TREE - WHAT TO DO IF?**  
As of 1/19/22 – Subject to Update

*Jonathan Sha*  
*Saltzman & Johnson Law Corp.*

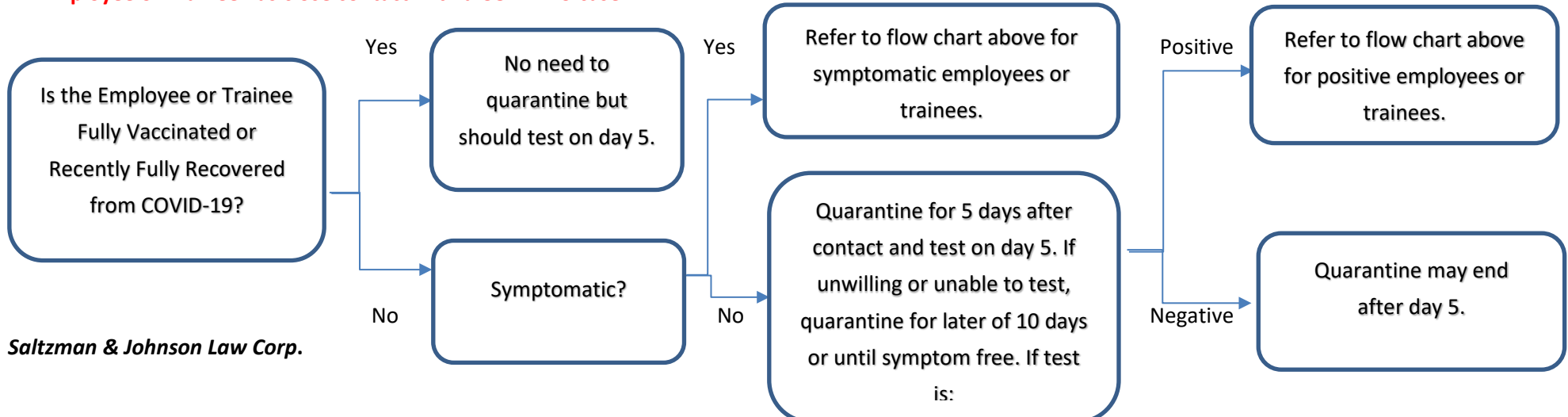
**An Employee or Trainee has COVID-19 symptoms:**



**An Employee or Trainee has a positive COVID-19 test result:**



**An Employee or Trainee has close contact with a COVID-19 case:**



*Saltzman & Johnson Law Corp.*